

IOOS INTEGRATED OCEAN OBSERVING SYSTEM

CARIBBEAN COASTAL OCEAN OBSERVING SYSTEM



CariCOOS/WxFlow Wind Measurements during Hurricane Irene over the U.S. Virgin Islands and Puerto Rico

August 21-22, 2011

For more information about wind observations contact:

Luis D. Aponte-Bermúdez, Ph.D., PE.

E-mail: luisd.aponte@upr.edu

or visit:

<http://www.caricoos.org/>

CariCOOS/WxFlow Hurricane Mesonet Site Locations

Station	Description	Lat.	Long.	Sensor Dist. Above Ground (m)	Ground Elev.(m)
X418	NavAid - San Juan, PR	18.45512	-66.12846	14.3	0.0
X419	NavAid - Del Rey Marina - Fajardo, PR	18.28938	-65.63200	13.4	7.3
X420	NavAid - Las Mareas - Guayama, PR	17.92859	-66.15970	8.8	1.2
X421	NavAid - Aguadilla, PR	18.43295	-67.15663	4.3	0.9
X422	Tower - Club Deportivo Del Oeste - Cabo Rojo, PR	18.09995	-67.18887	16.2	1.5
X423	NavAid - Yabucoa, PR	18.05245	-65.82809	9.8	3.7
X424	Concrete Pole - Gurabo, PR	18.25623	-65.99167	10.0	47.9
X425	Savana Island, US VI	18.33737	-65.08300	4.6	82.9
X426	Buck Island, US VI	18.27823	-64.89260	12.2	27.4
X427	Sandy Point NWR, US VI	17.67771	-64.89989	9.8	0.9
X428	Crown Mountain, US VI	18.35537	-64.96693	21.9	406.3
X429	Two Brothers, US VI	18.34291	-64.81730	6.1	4.6



Wind Speed data Summary

21-Aug-2011 6:00 AM to 22-Aug-2011 12:00 PM

Station	Description	Max 5-Sec Wind Gust (mph)	Max 5-Sec. Wind Gust Time Stamp (GMT 04:00)	Max 5-Min. Avg. Wind Speed (mph)	Max 5-min Avg. Wind Speed Time Stamp (GMT 04:00)	Min Pressure (mbar)	Pressure Time Stamp (GMT 04:00)
X418	NavAid - San Juan, PR	60.6 @ 28°	2:30 AM AUG/22/2011	45.7 @ 28°	2:30 AM AUG/22/2011	990.1	3:40 AM AUG/22/2011
X419	NavAid - Del Rey Marina - Fajardo, PR	71.1 @ 108°	1:20 AM AUG/22/2011	62.9 @ 108°	1:20 AM AUG/22/2011	994.0	1:25 AM AUG/22/2011
X420	NavAid - Las Mareas - Guayama, PR	42.5 @ 271°	12:35 AM AUG/22/2011	38.0 @ 244°	3:20 AM AUG/22/2011	998.2	2:05 AM AUG/22/2011
X421	NavAid - Aguadilla, PR	36.0 @ 327°	6:55 AM AUG/22/2011	33.6 @ 316°	7:15 AM AUG/22/2011	1000.8	7:50 AM AUG/22/2011
X422	Tower - Club Deportivo Del Oeste - Cabo Rojo, PR	30.8 @ 49°	4:50 PM AUG/21/2011	18.2 @ 25°	12:00 AM AUG/22/2011	1001.5	4:20 AM AUG/22/2011
X423	NavAid - Yabucoa, PR	64.9 @ 251°	2:55 AM AUG/22/2011	50.9 @ 249°	2:45 AM AUG/22/2011	991.7	1:05 AM AUG/22/2011
X424	Concrete Pole - Gurabo, PR	55.6 ^a @ 350°	1:45 AM AUG/22/2011	33.2 @ 350°	1:45 AM AUG/22/2011	985.1	2:25 AM AUG/22/2011
X425	Savana Island, US VI	NA	NA	NA	NA	NA	NA
X426	Buck Island, US VI	69.3 @ 69°	7:15 PM AUG/21/2011	65.3 @ 69°	7:15 PM AUG/21/2011	1002.0	8:00 PM AUG/21/2011
X427	Sandy Point NWR, US VI	41.3 @ 353°	5:40 PM AUG/21/2011	32.6 @ 352°	5:45 PM AUG/21/2011	NA	NA
X428	Crown Mountain, US VI	62.4 @ 30°	5:05 PM AUG/21/2011	49.7 @ 30°	5:45 PM AUG/21/2011	1003.4	6:05 PM AUG/21/2011
X429	Two Brothers, US VI	59.0 @ 60°	3:50 PM AUG/21/2011	54.1 @ 66°	4:05 PM AUG/21/2011	1001.0	4:30 PM AUG/21/2011

^a3-Sec. Gust

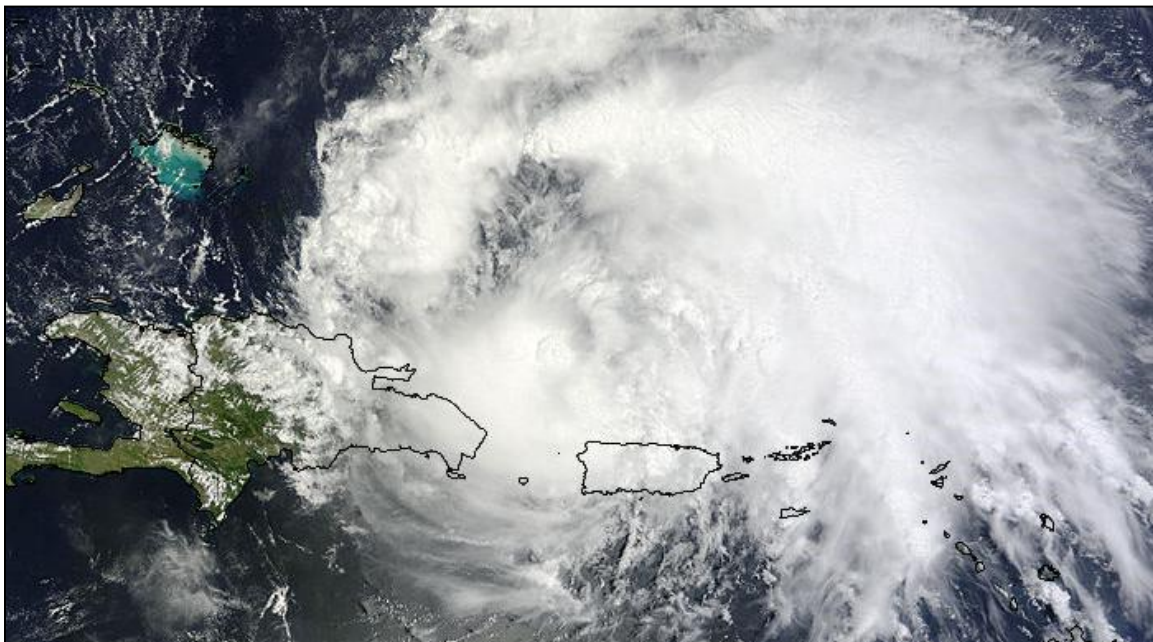
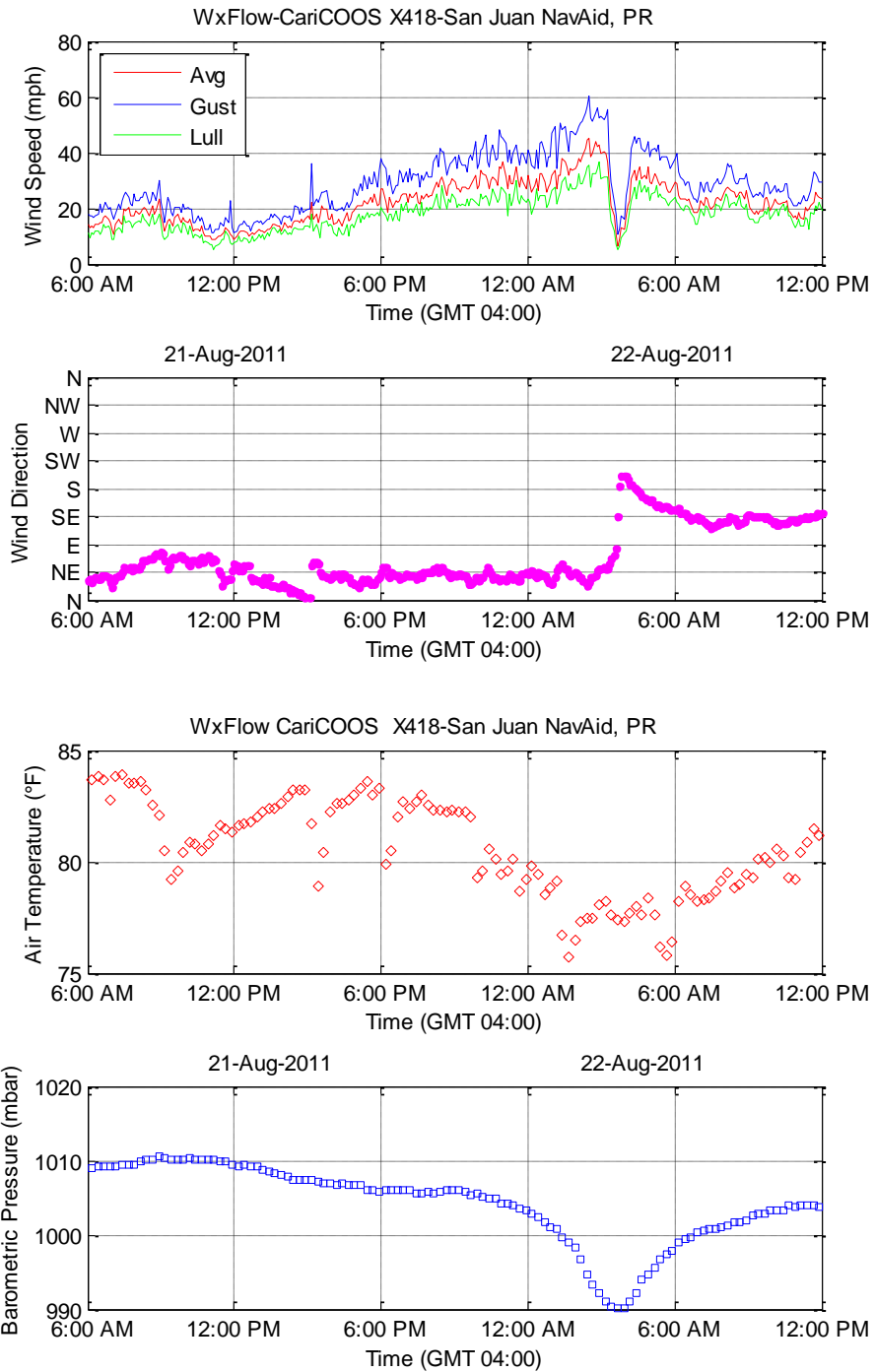
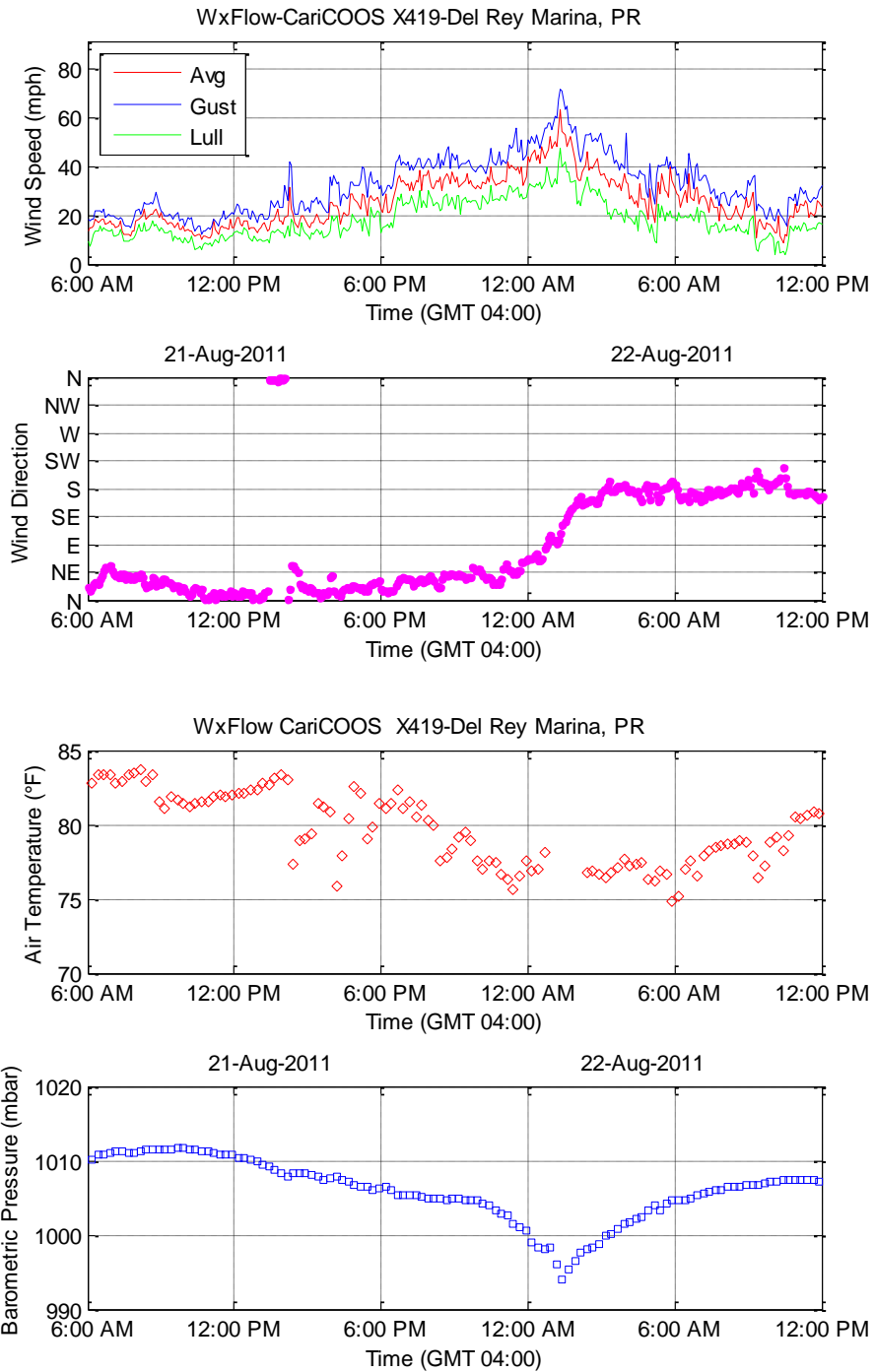


Figure 1 - This image of Hurricane Irene was captured from NASA's Terra satellite when the storm's center had passed Puerto Rico at 15:20 UTC (11:20 a.m. EDT) on Aug. 22, 2011. Credit: [NASA Goddard/MODIS Rapid Response Team](#)

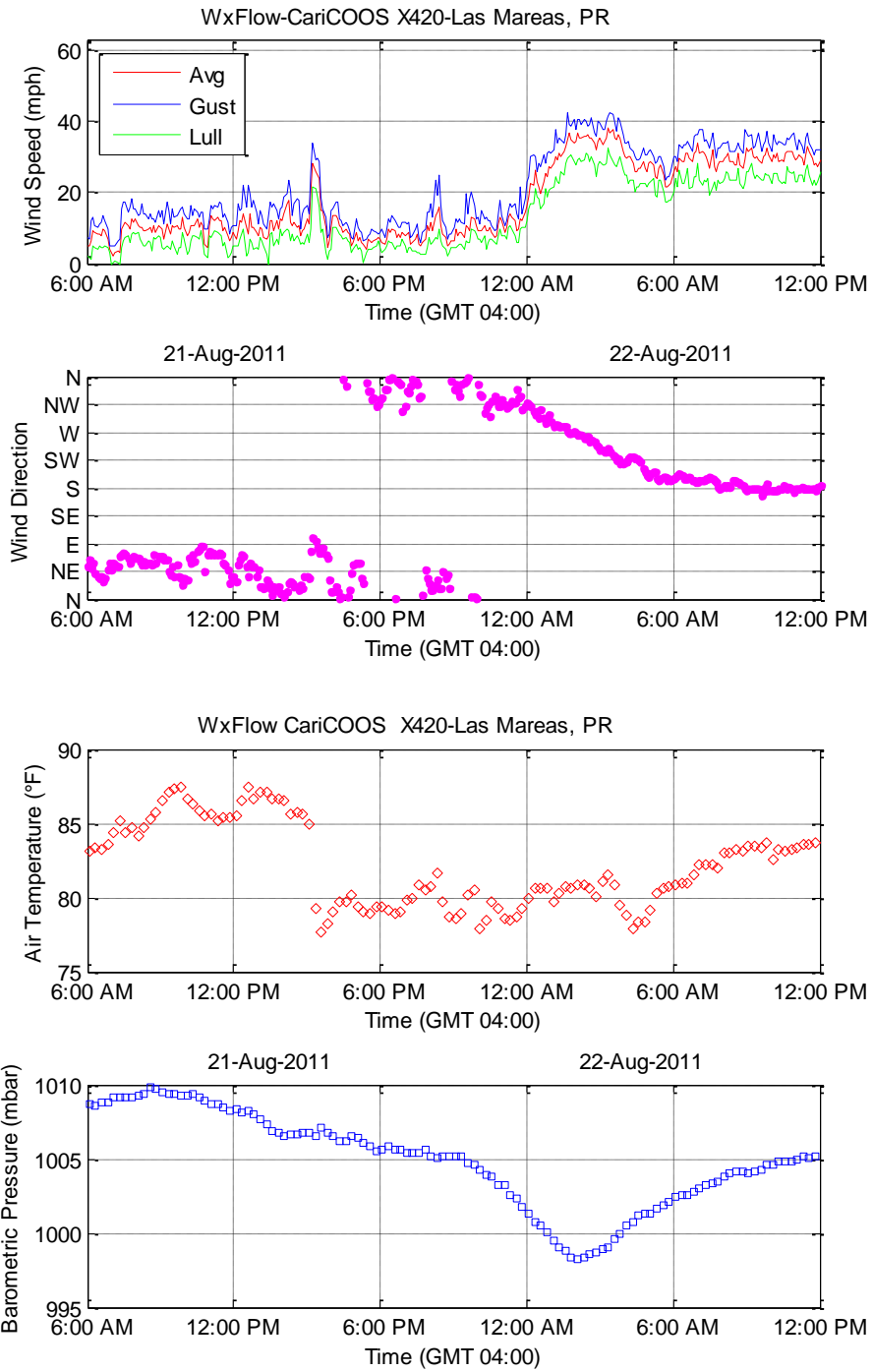
X418 – San Juan NavAid, PR



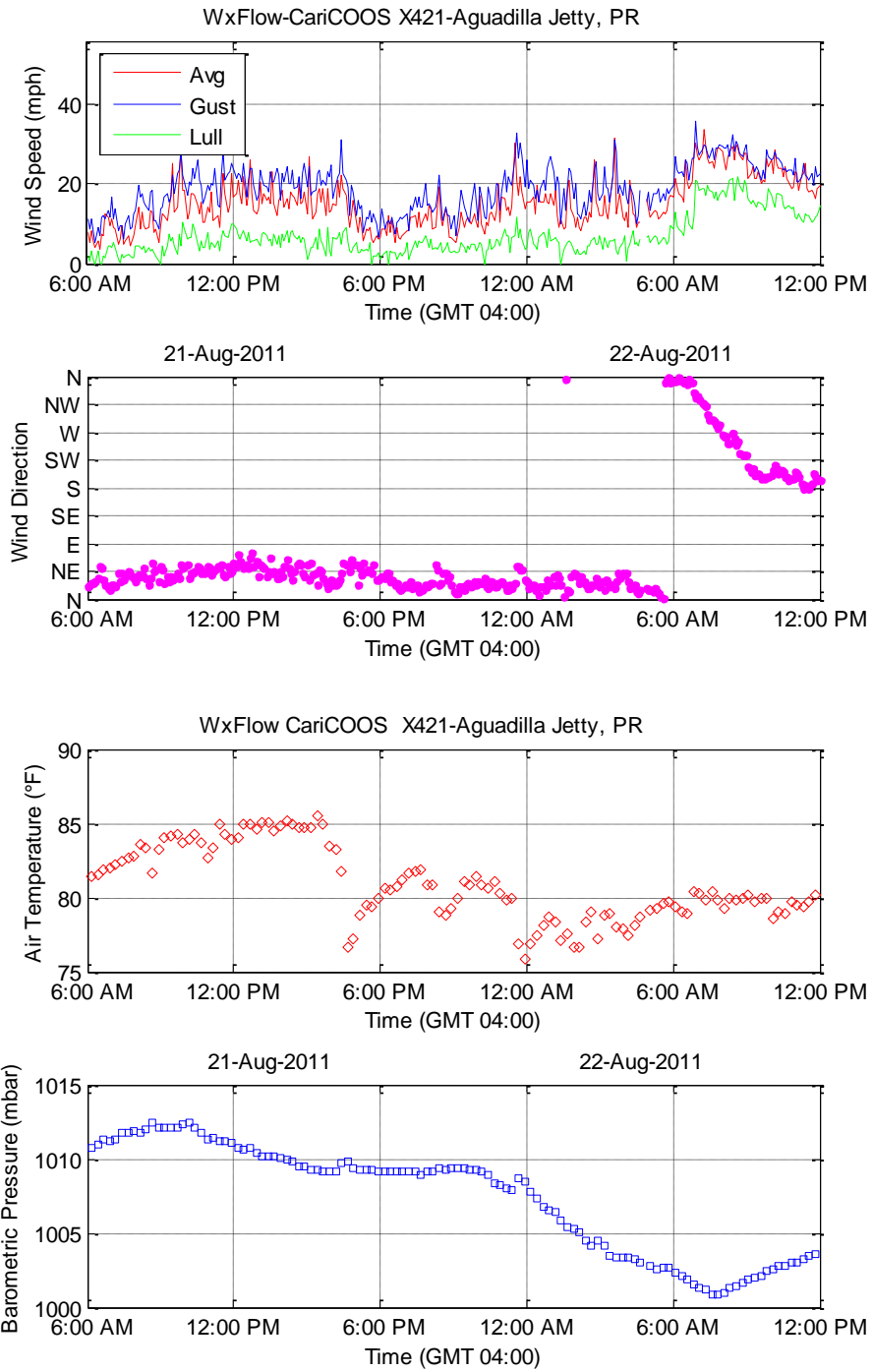
X419 – Del Rey Marina, Fajardo, PR



X420 – Las Mareas- Guayama, PR

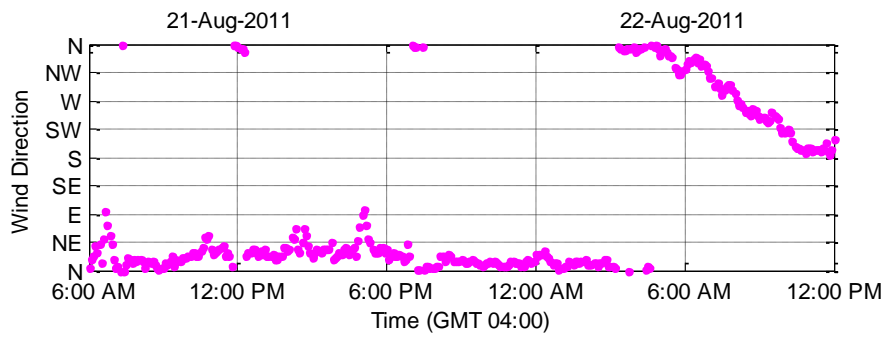
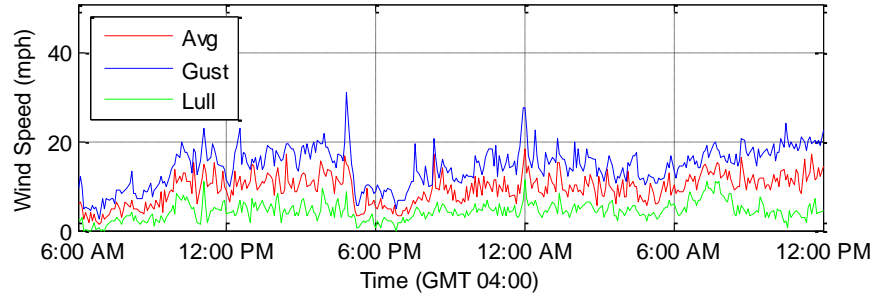


X421 – Jetty Aguadilla, PR

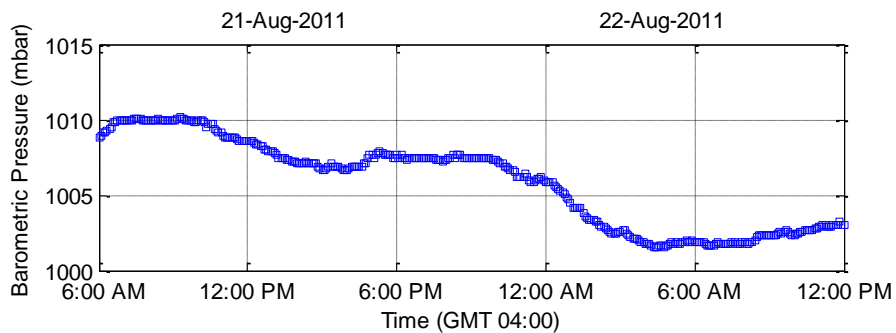
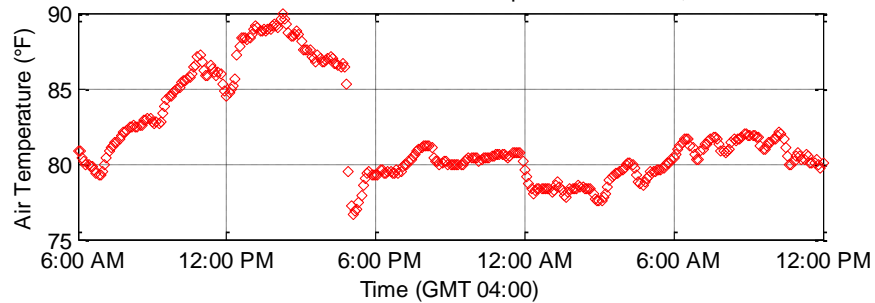


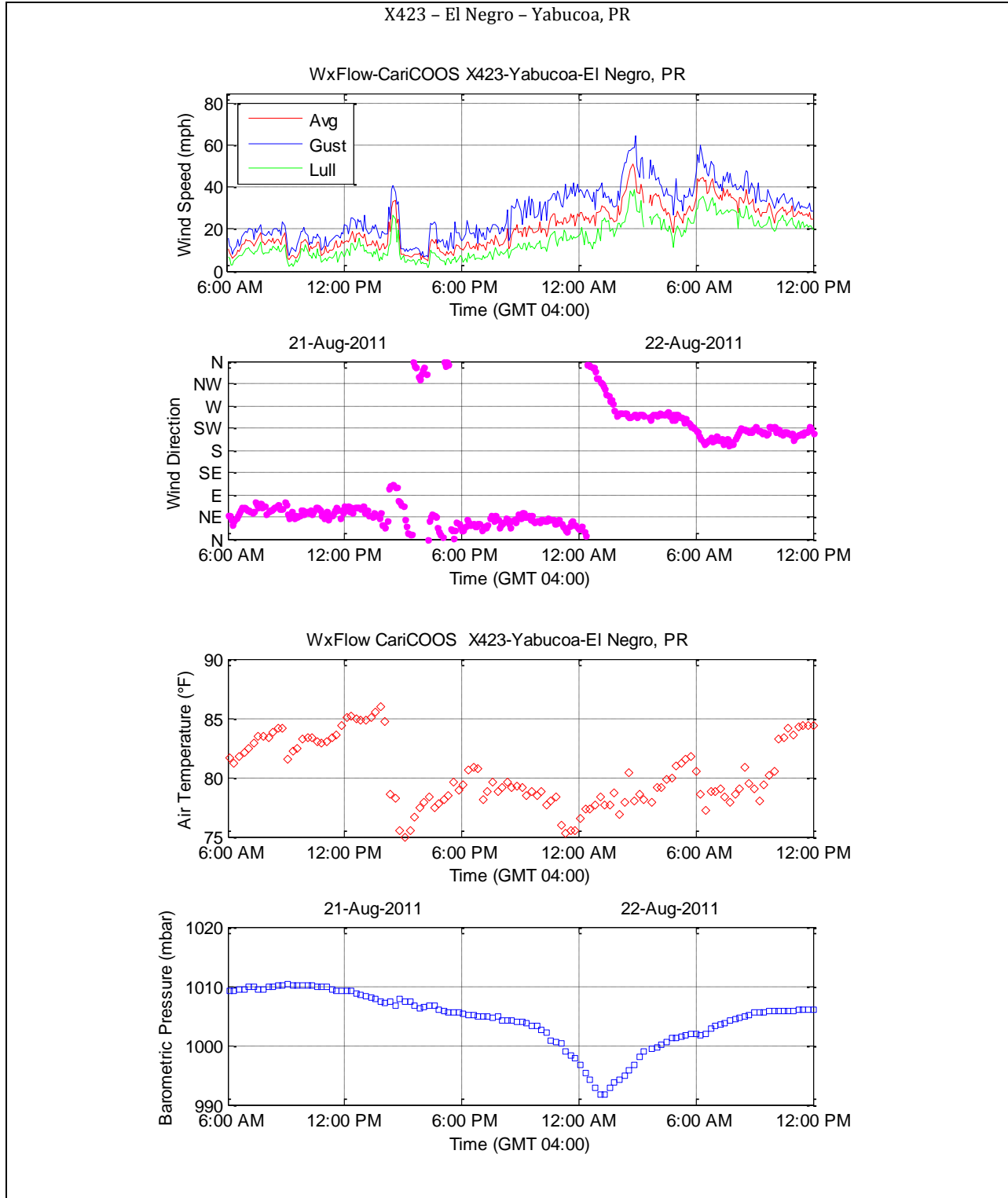
X422 - Club Deportivo del Oeste - Cabo Rojo, PR

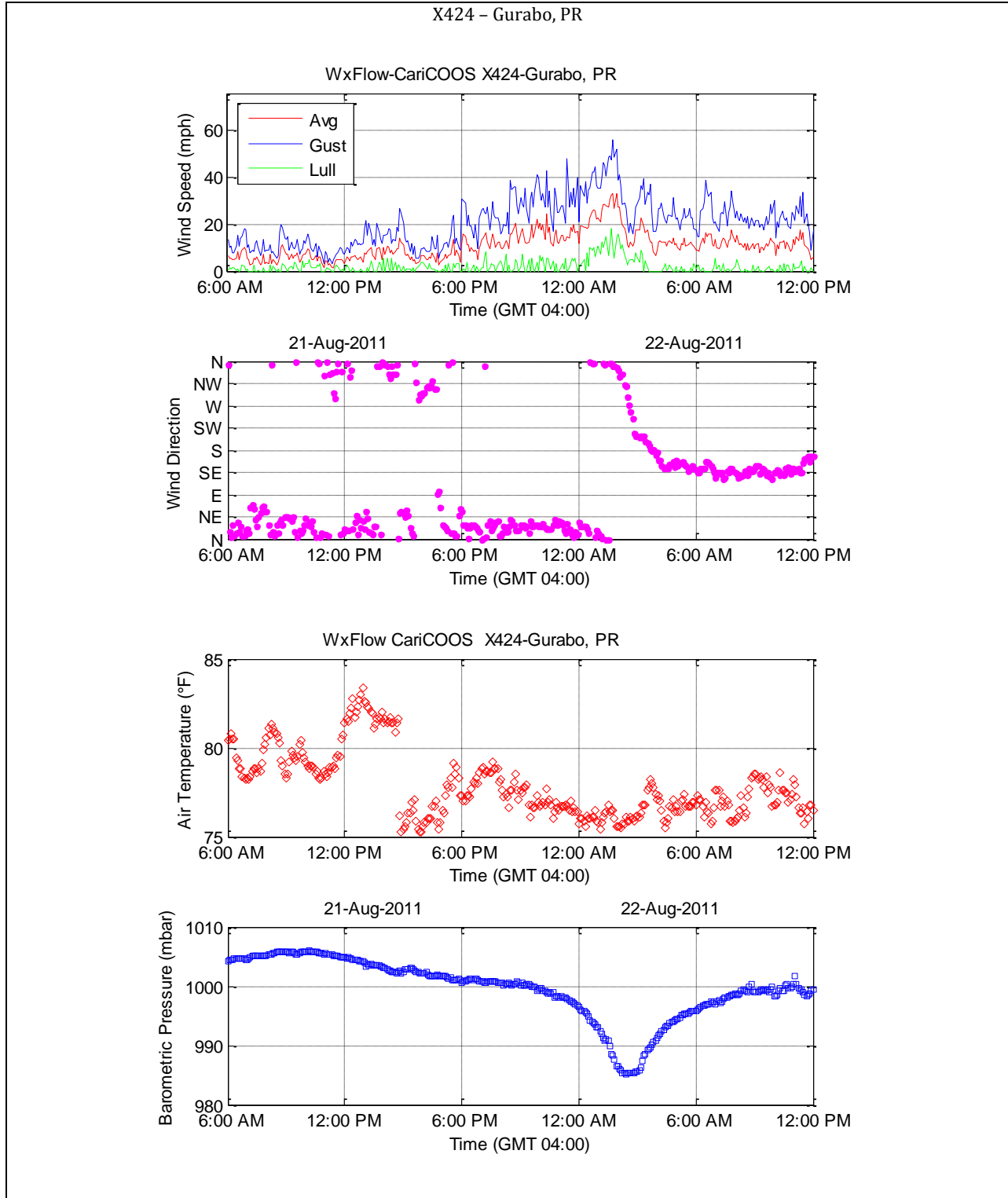
WxFlow-CariCOOS X422-Club Deportivo Del Oeste, PR



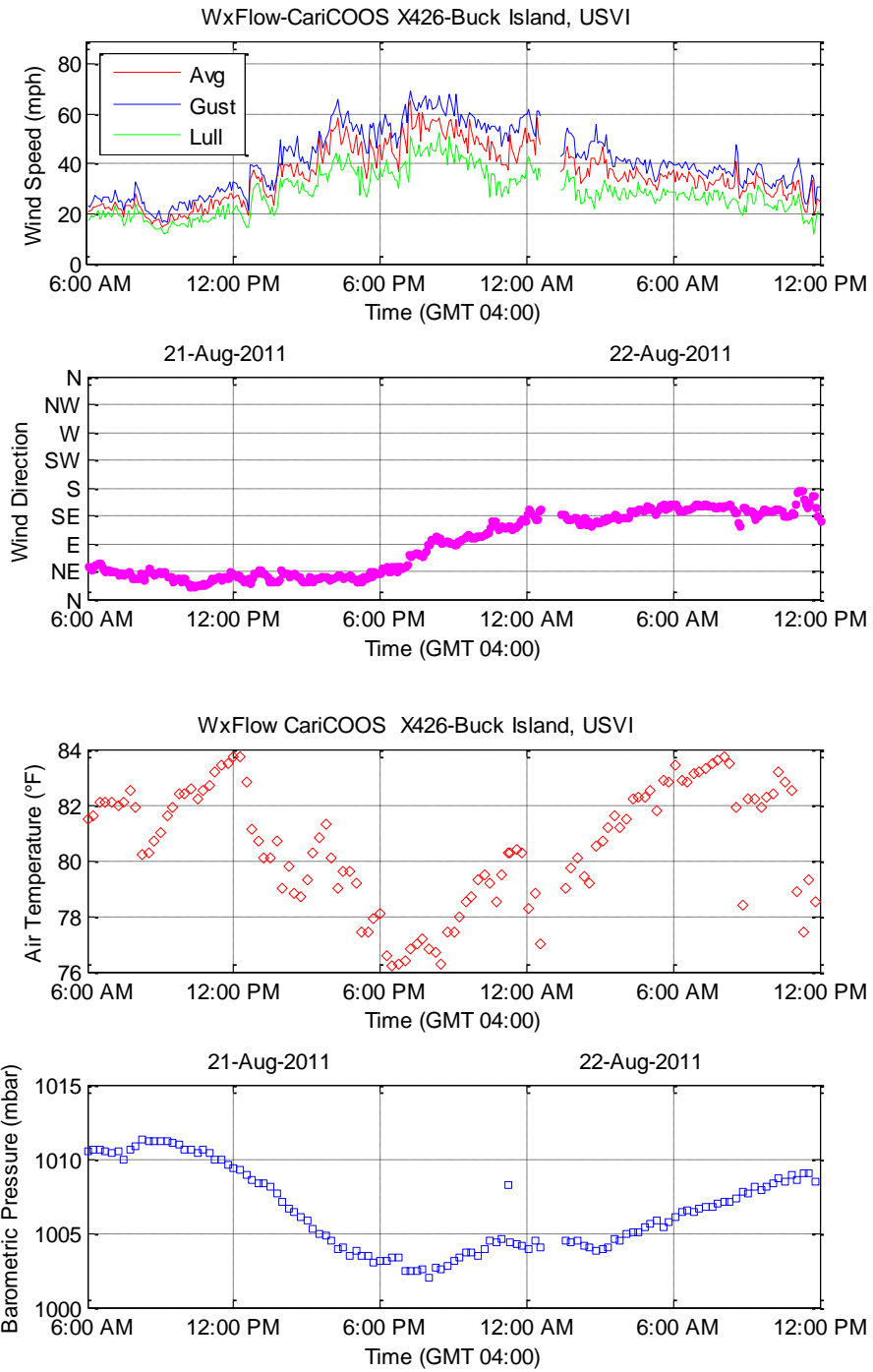
WxFlow CariCOOS X422-Club Deportivo Del Oeste, PR



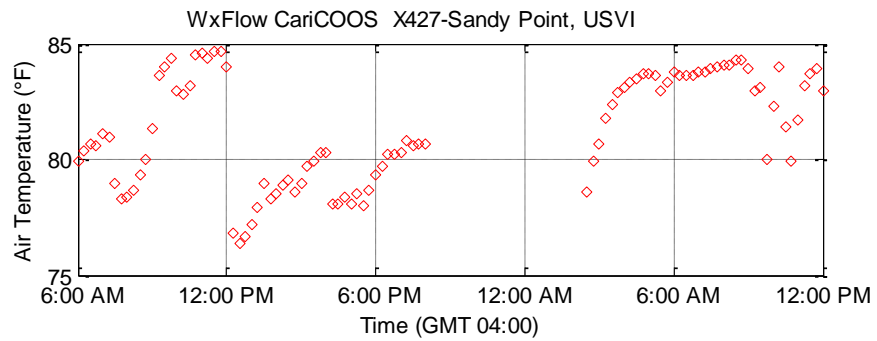
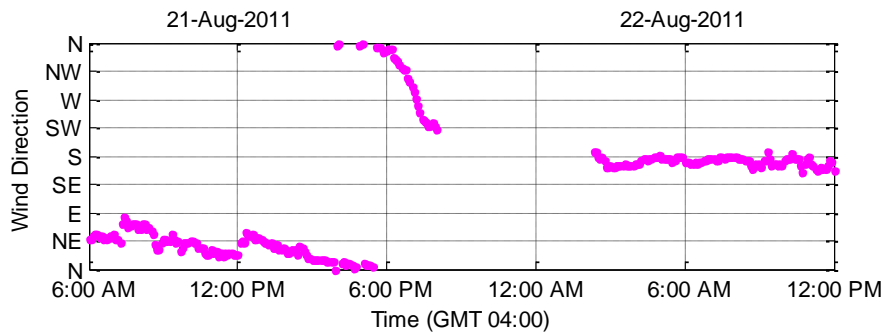
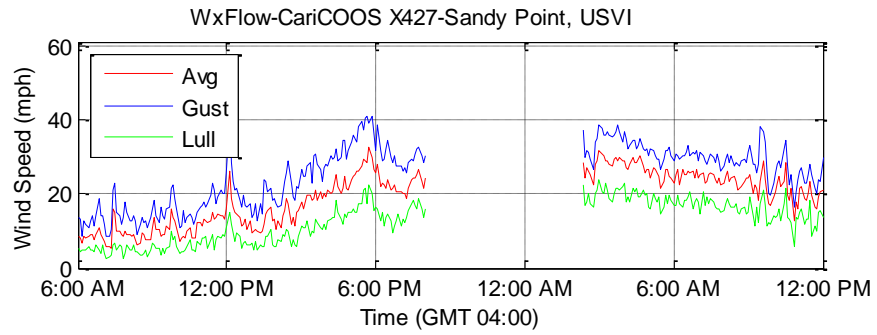


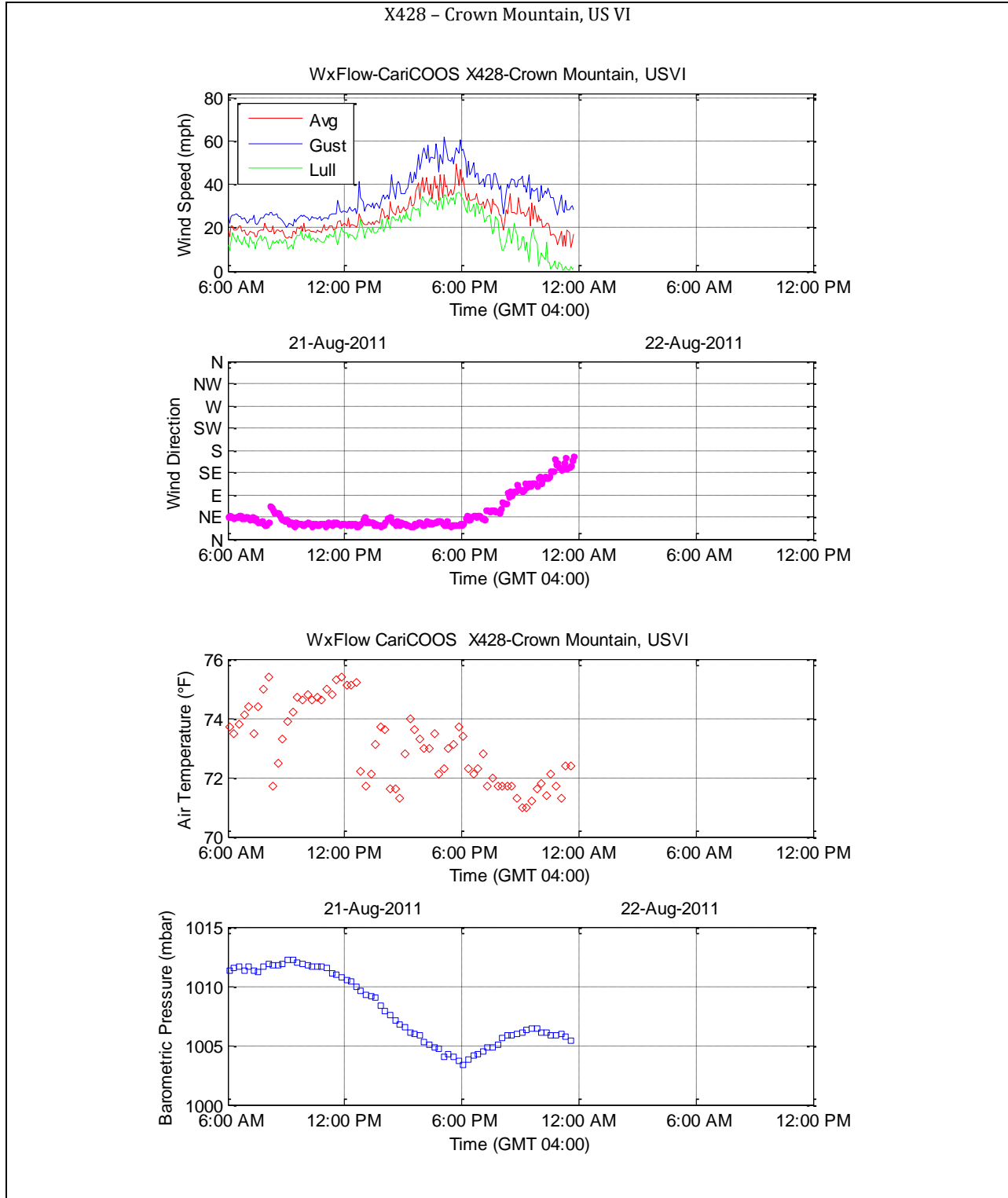


X426 – Buck Island, US VI



X427 – Sandy Point, US VI





X429 – Two Brothers, US VI

